

Module 6: Work, Play, Live

Exercise 2: Think local! Shop local!



Source: <https://www.pexels.com/fr-fr/photo/photo-vue-de-dessus-du-restaurant-2253643> by Dmitry Zvoltskiy

First, walk around your city and note all the local businesses that might be of interest to you in this mapping project.

Explaining your initiative, you may ask the shop owners for a business card which contains their information and add them later on the digital map.

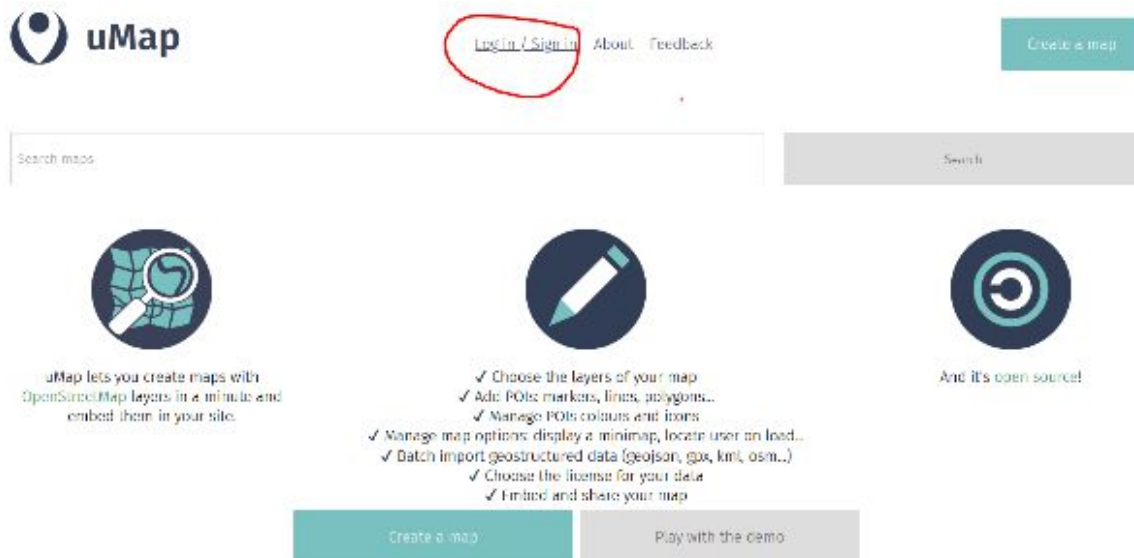
Once all the shops are identified (and if possible, with their card or info) go to [uMap website](https://umap.openstreetmap.fr/en/) (open source) and create an account.

With this application, you can customise a digital map and mark local stores on it. Then you can add information collected for each specified point of interest.

Create a map including shops and points of interest

1. Go to <http://umap.openstreetmap.fr/en/>
2. Create an account by clicking on “sign in”

This publication reflects the views of the authors; the Commission cannot be held responsible for any use which might be made of the information contained herein.

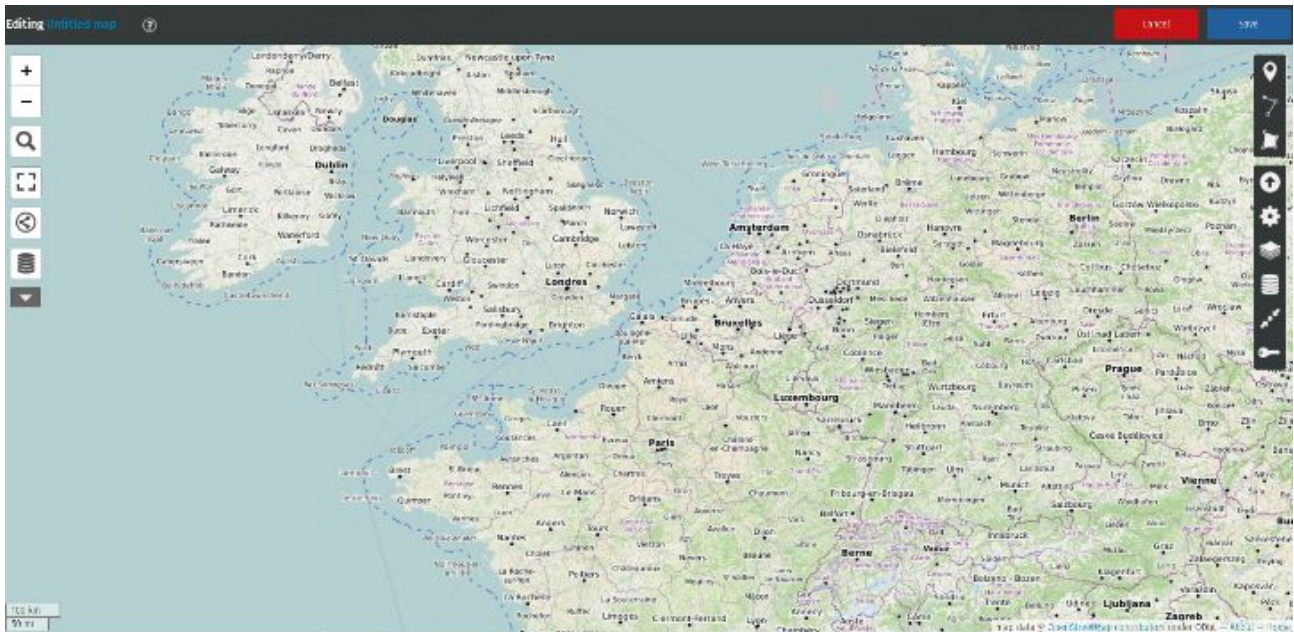


GET INSPIRED, BROWSE MAPS

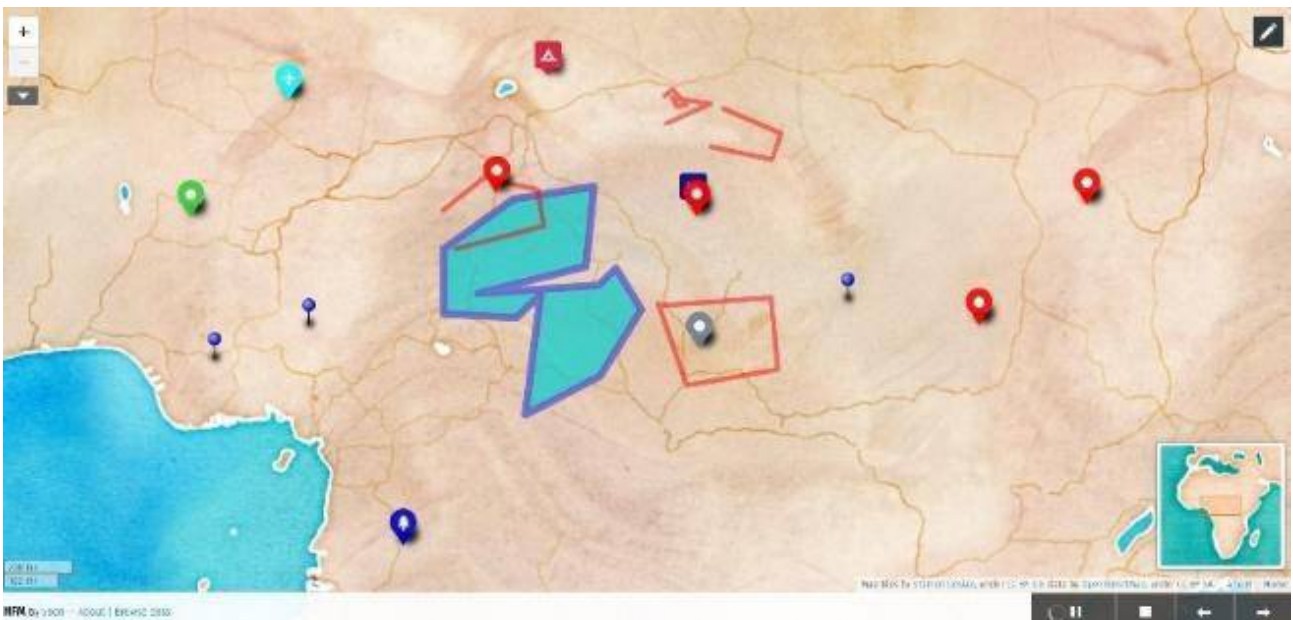


GET INSPIRED, BROWSE MAPS

3. Then, click on “create a map”
4. Select your city by zooming on it



5. You should use this tutorial to create your map <https://www.youtube.com/watch?v=sfyw8fJOIJJ>
6. Mark shops and points of interest in your city on the map.
7. Once completed, you should have this type of outcome:



Finally, share this map on your social media (Facebook, Twitter, Instagram, YouTube...) and promote the local economy.

This publication reflects the views of the authors; the Commission cannot be held responsible for any use which might be made of the information contained herein.